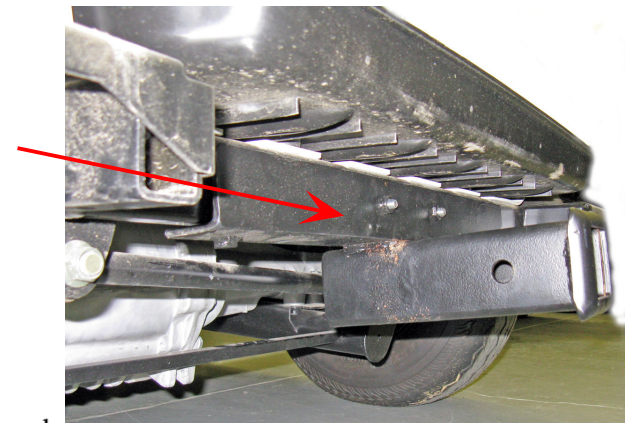


This installation uses (4) 8 mm - 1.25 X 65 mm bolts, (4) flat washers, and (4) lock washers. Set the hitch in place and install the bolts finger-tight only. It may be necessary to tap the holes first using a 8 mm 1.25 tap. You will also need to drill the pre-existing bag well holes to 25/64 (close as you can). Once all the bolts and washers are in place, tighten the bolts. **Please wear appropriate eye protection and use proper jack stands to support the car!**

For The Drive carts remove the rear bumper. Install the hitch to the two existing holes. Mark the outer holes and drill with a 25/64" bit. Tighten hitch and install bumper.



Buggies Unlimited  
1-888-444-9994  
www.buggiesunlimited.com

© Copyright 1997-2008 Buggies Unlimited. All Rights Reserved.

